

St. James Fire Department, Inc.

■ **100% Volunteer**



Table of Contents

- **Who We Are**
- **St. James Fire District Map**
- **What We Cover**
- **Types of Emergencies**
- **Funding Sources**
- **Organization and Staffing**
- **Facilities and Equipment**
- **Call Types and Volume**
- **Training Requirements**
- **Looking Ahead: Long-Term Planning**

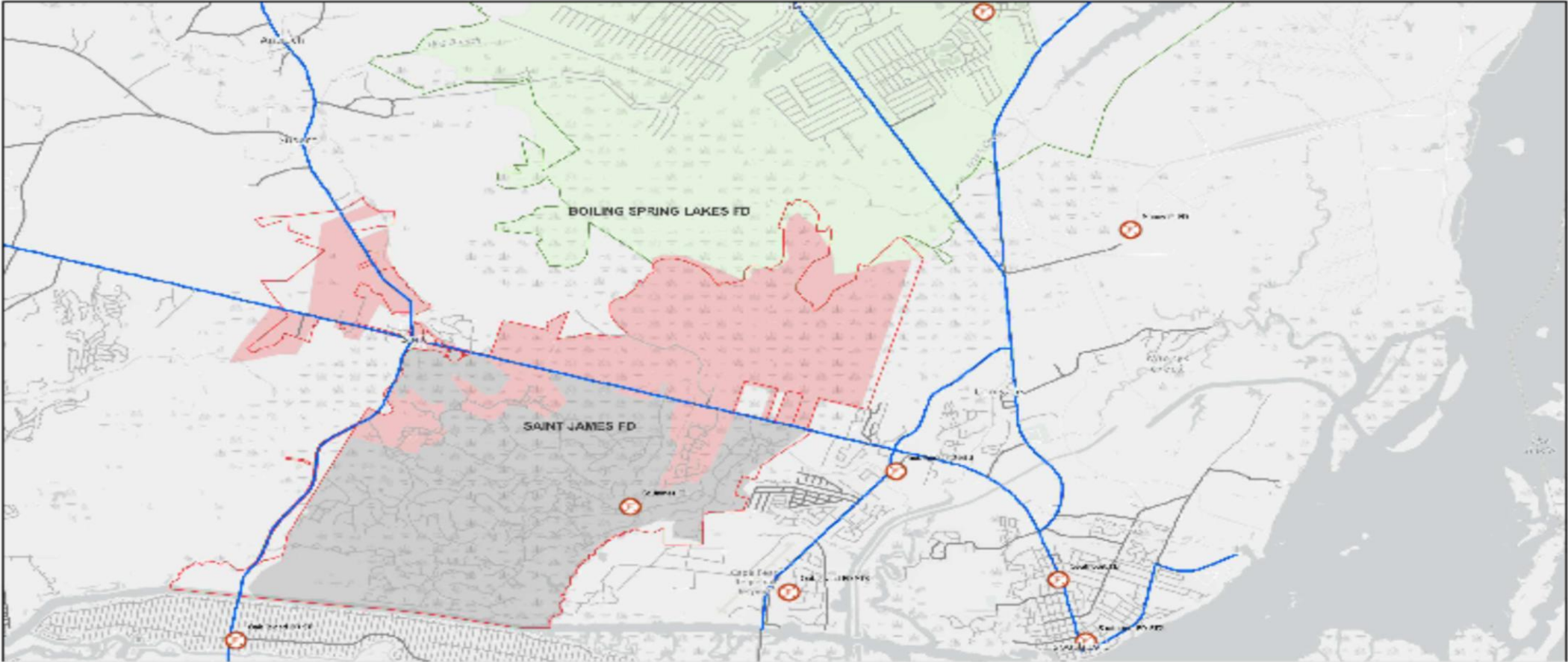
The background features a series of concentric circles in light gray, some solid and some dashed, creating a ripple effect. A large red speech bubble is centered on the page, pointing downwards.

SJFD Operations

Who We Are

- Founded in October, 1998 as an all-volunteer department
- 501c(3) Non-Profit
- Providing fire, emergency medical and fire police services to St. James, Arbor Creek and a Rural Fire District
- Mutual Aid agreements with local area fire departments
- Professional services rated ISO 3

St James Fire District Map



Gray shaded area: Municipal Fire District – Town of St. James

Pink shaded area: Rural Fire District – Unincorporated portions of Brunswick County

A red speech bubble graphic with a white outline, pointing downwards. It contains the text "What We Cover" in white, bold, sans-serif font.

What We Cover

Service Area Includes:

- **Residential homes**
- **Apartments & Condos**
- **Hotel**
- **Commercial buildings**
- **Retail spaces**
- **Metal recycling business**
- **Forested vacant land**

A red speech bubble graphic with a white outline, pointing downwards. It contains the text 'Types of Emergencies' in white, bold, sans-serif font. The background of the slide features faint, curved, concentric lines in light gray.

Types of Emergencies

- **Building & Brush Fires**
- **Motor Vehicle Accidents**
- **Road Closures**
 - **Hurricanes & Storms**
 - **Accidents**
- **Medical Events**
 - **Cardiac Arrests**
 - **Strokes**
 - **Illness & Psychiatric**
 - **Lift Assists**

A red speech bubble graphic with a white outline, pointing towards the list of funding sources. It has a rectangular body and a triangular tail.

Funding Sources

- **Contract with the Town of St James (local taxes)**
- **Fire Services and EMS Franchise agreements with Brunswick County (Fire Fees)**
- **Ambulance transport fees**
- **Grants and donations**
- **Groundcover sales held biennially**

The background features a series of concentric circles in light gray, some solid and some dashed, creating a ripple effect. A large, solid red speech bubble is centered on the page, pointing downwards.

Organization and Staffing

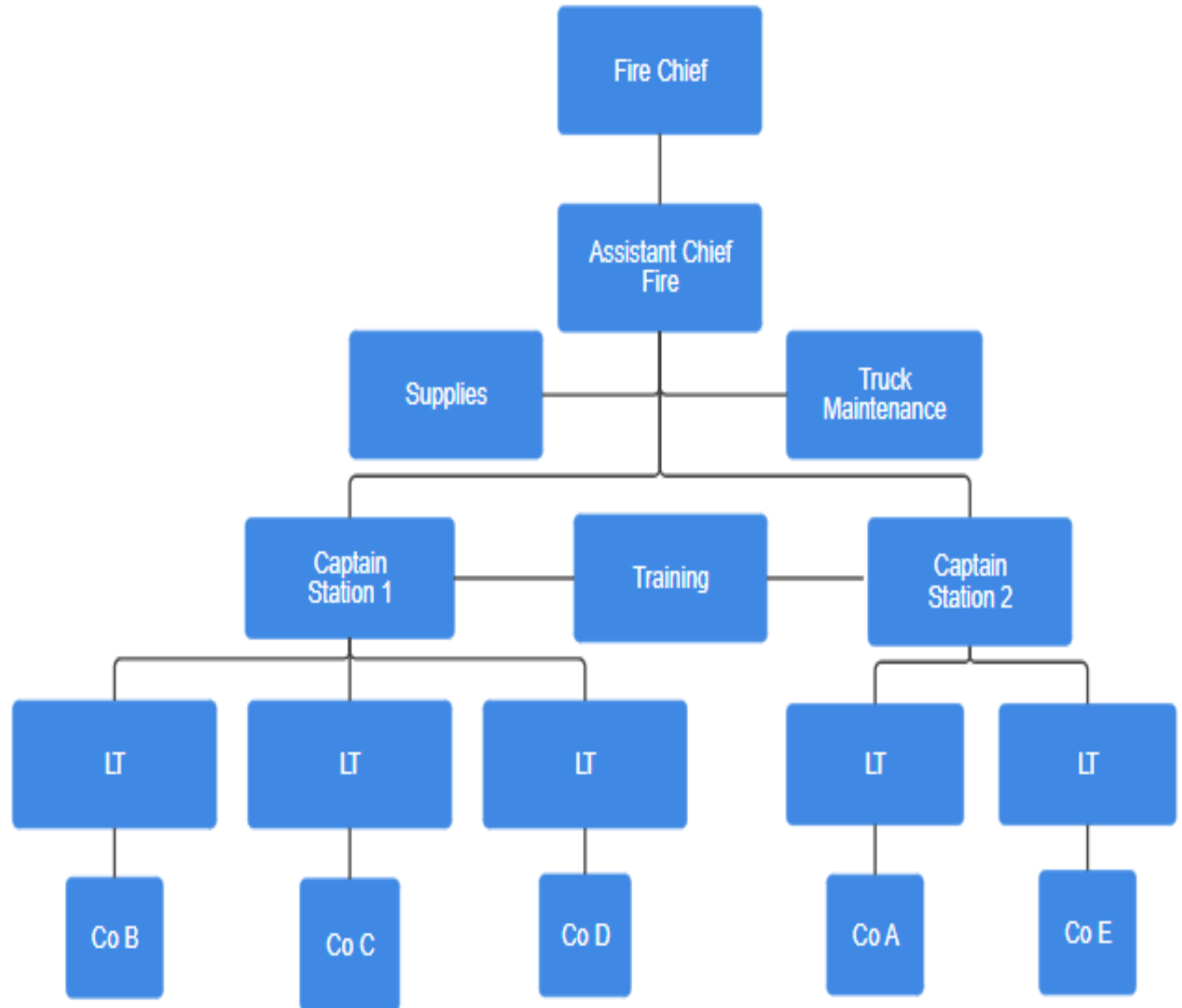
The background features a series of concentric circles in light gray, some solid and some dashed, creating a ripple effect. A bright red rectangular callout box is positioned in the center, with a small triangular pointer at its bottom center.

**All Volunteer Staff
Saves Big Money
Fiscally Responsible
Operation**

Fire Division

Staff Count as of June 30, 2025

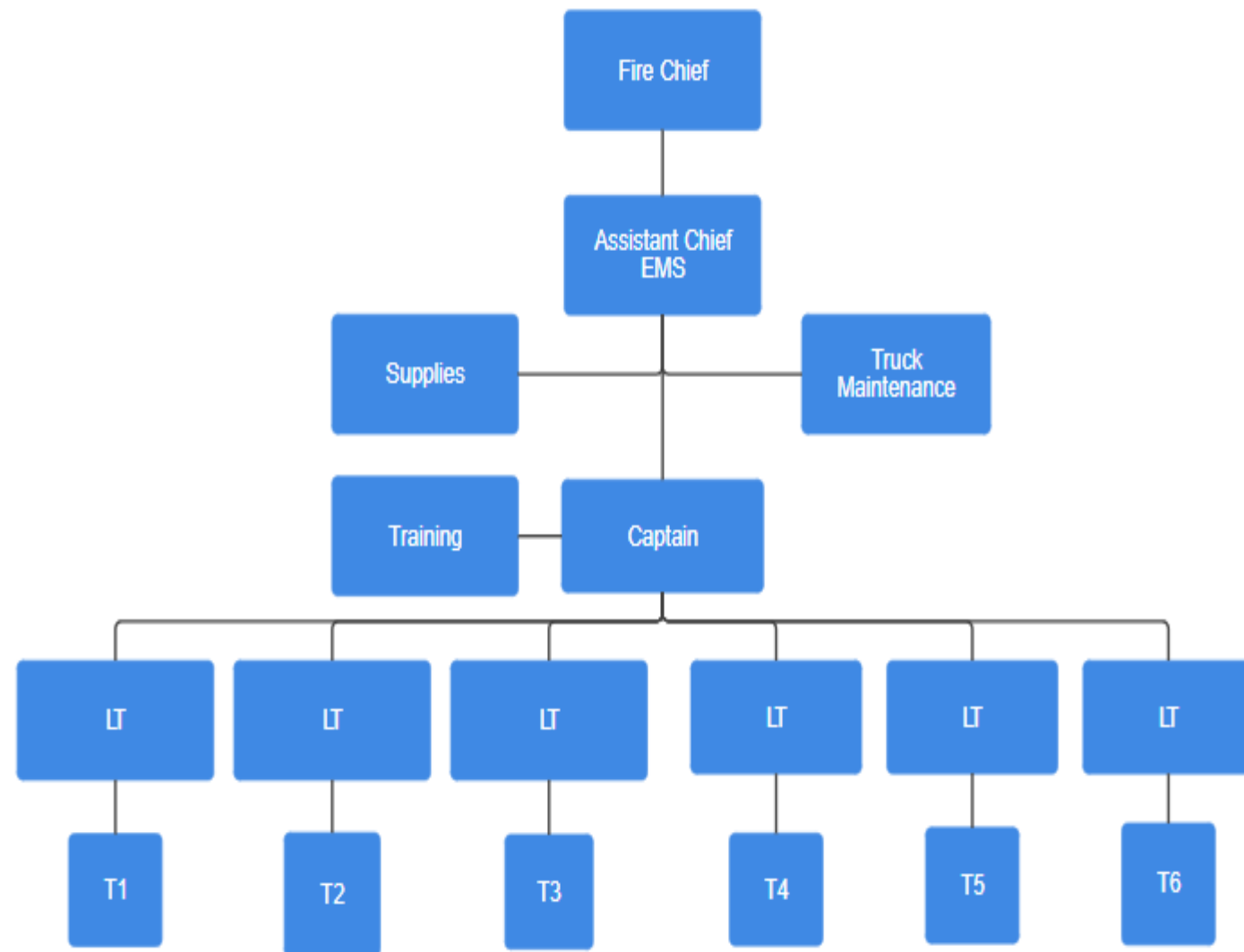
47



EMS Division

Staff Count as of June 30, 2025

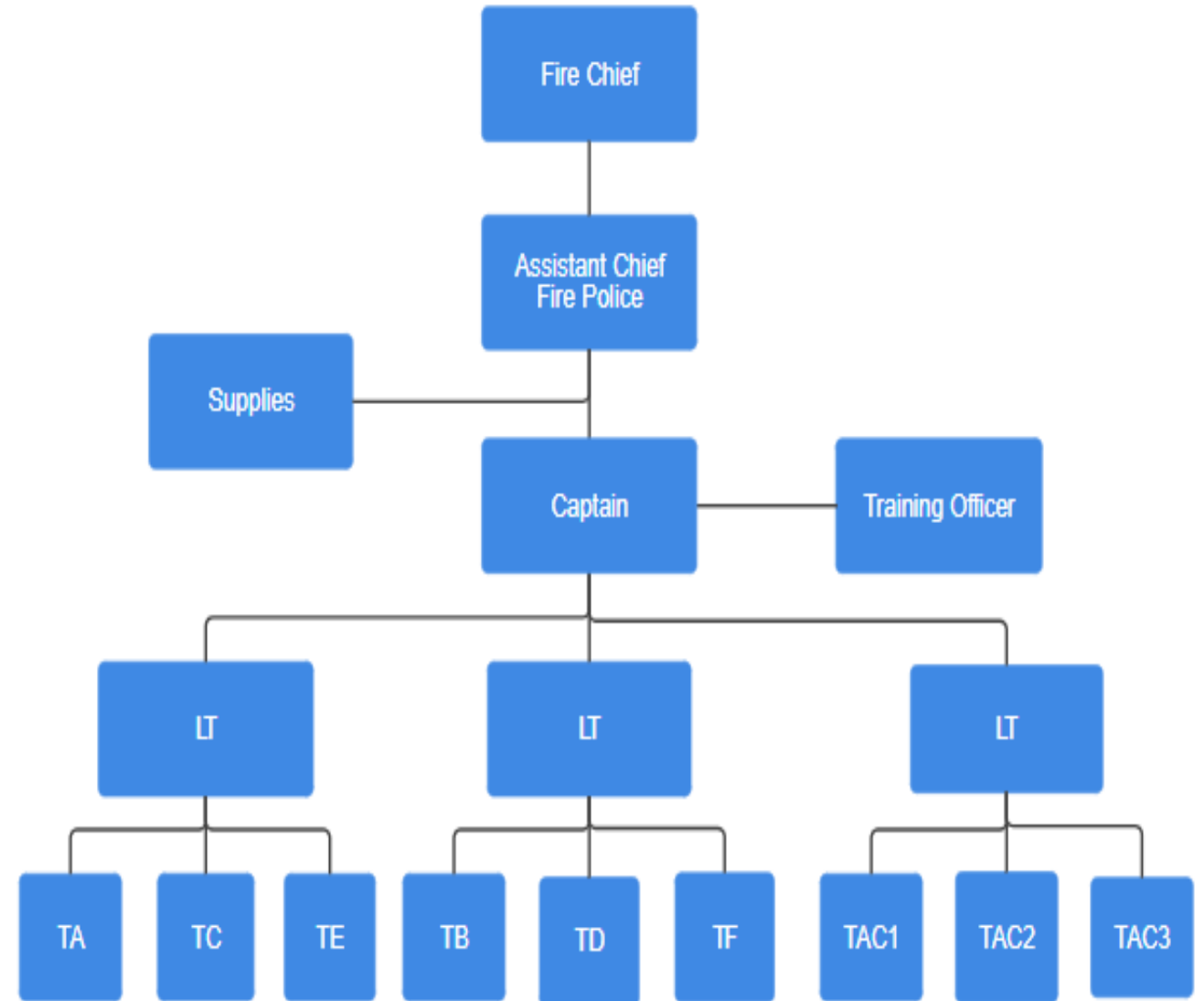
32



Fire Police Division

Staff Count as of June 30, 2025

26



The background features a series of concentric circles in light gray, some solid and some dashed, creating a ripple effect. A large, solid red speech bubble is centered on the page, pointing downwards.

Facilities and Equipment

Station 1

Station One Fire House and
department administrative offices
located at 3628 St. James Dr.



Station 2

Station Two Fire House and
Emergency Operations Center
located at 3621 Oceanic Dr.



Our Fleet

We maintain a fleet of vehicles that support our two major emergency services functions: Fire Suppression and Emergency Medical Services. These include:

- 3780 – Chief's Command Vehicle
- 3781 – Captain's Command Vehicle
- 3761 – 75' Aerial Tower
- 3771 – Pumper
- 3772 – Pumper
- 3773 – Pumper
- 3777 – Brush Truck
- 3795 – Rescue Truck
- 4795 – Ambulance
- 4796 – Ambulance
- 4779 – Utility/Rehab Vehicle & Trailer

For more information about these vehicles, see the Equipment tab under [About Us](#).

The background features a series of concentric circles in light gray, some solid and some dashed, creating a ripple effect. A large red speech bubble is centered on the page, containing the text.

Call Types and Volume

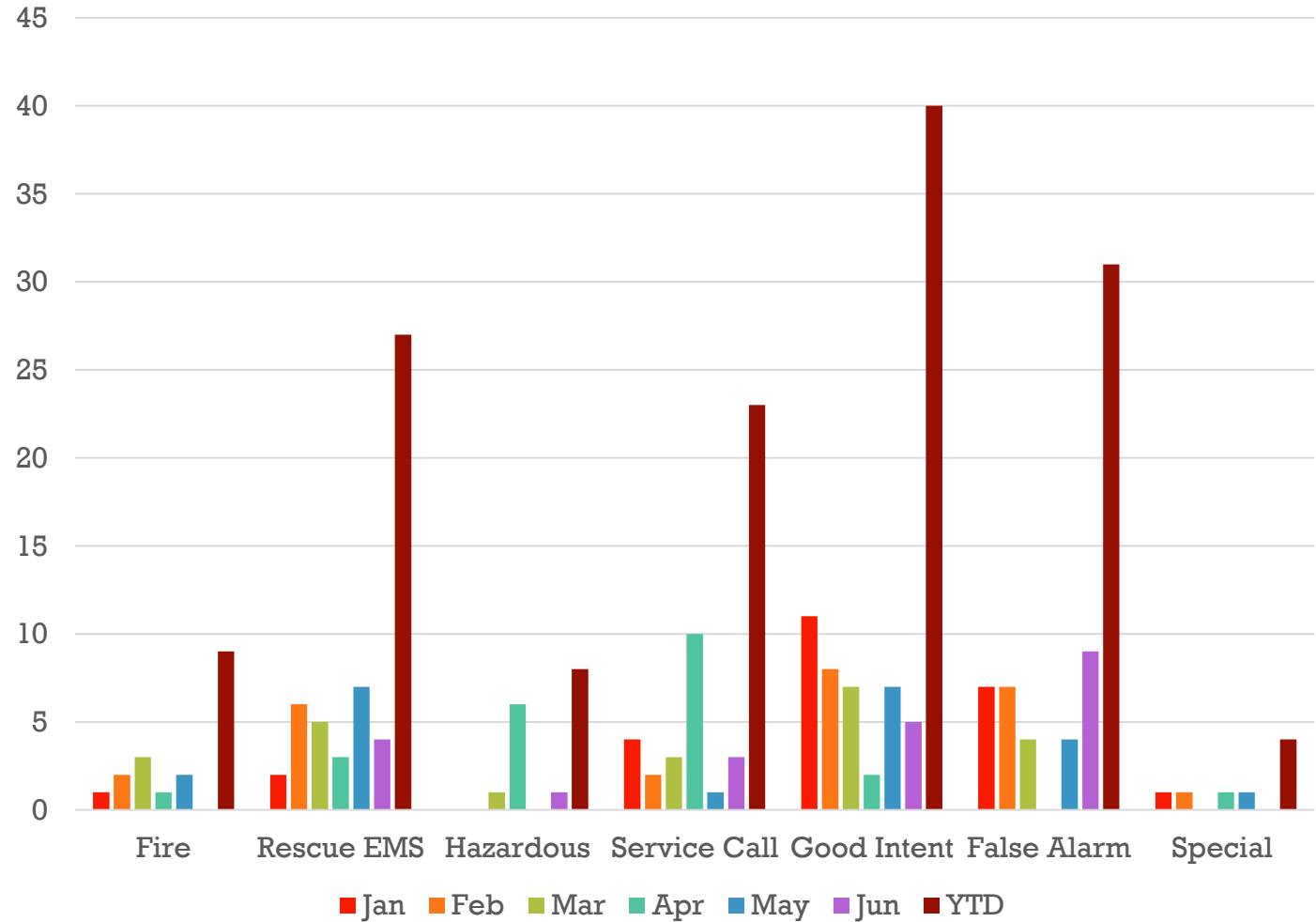
Jan 1 – June 30, 2025

Fire Divison YTD Calls

142

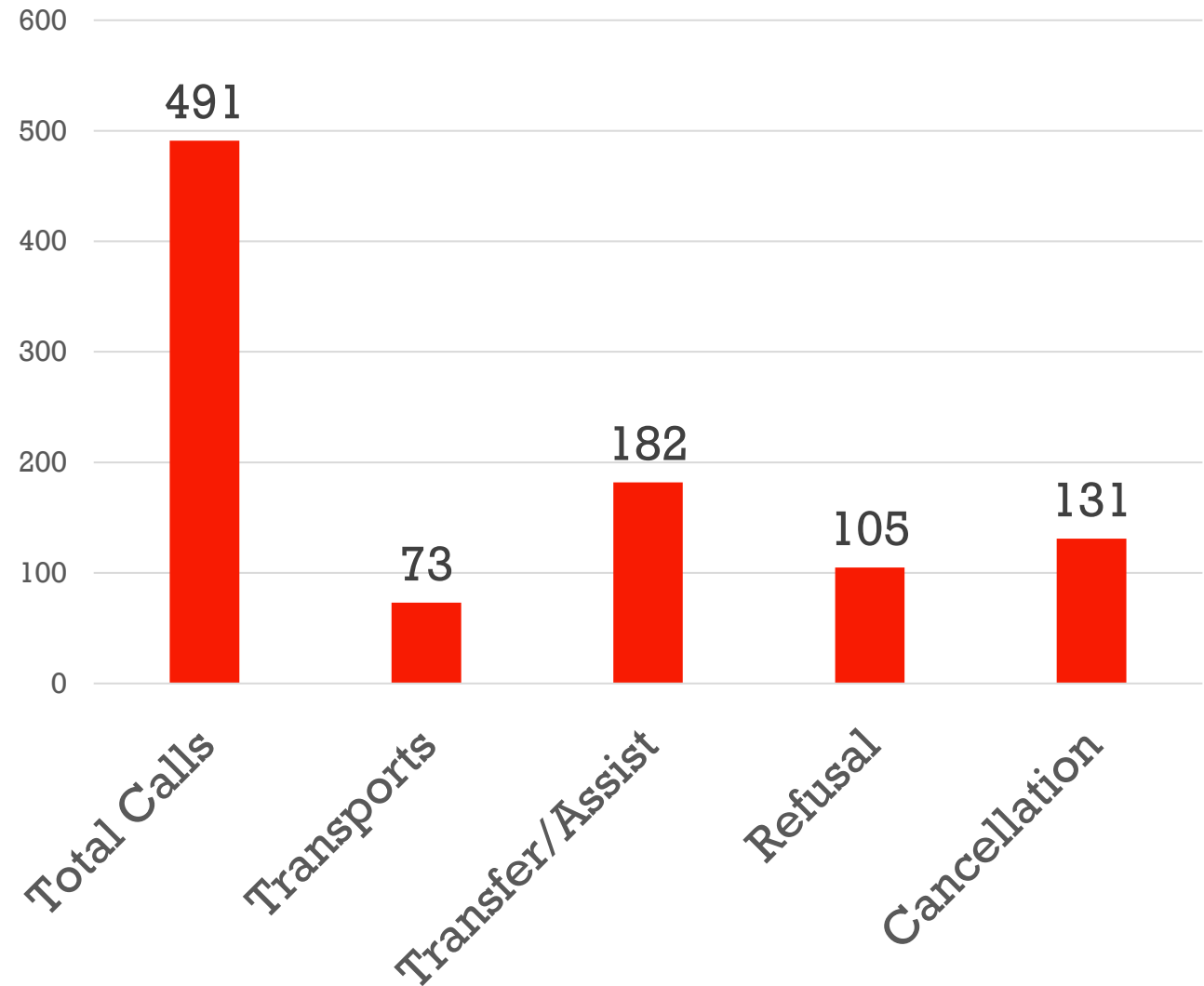
As of June 30, 2025

Monthly Call Volume by Type



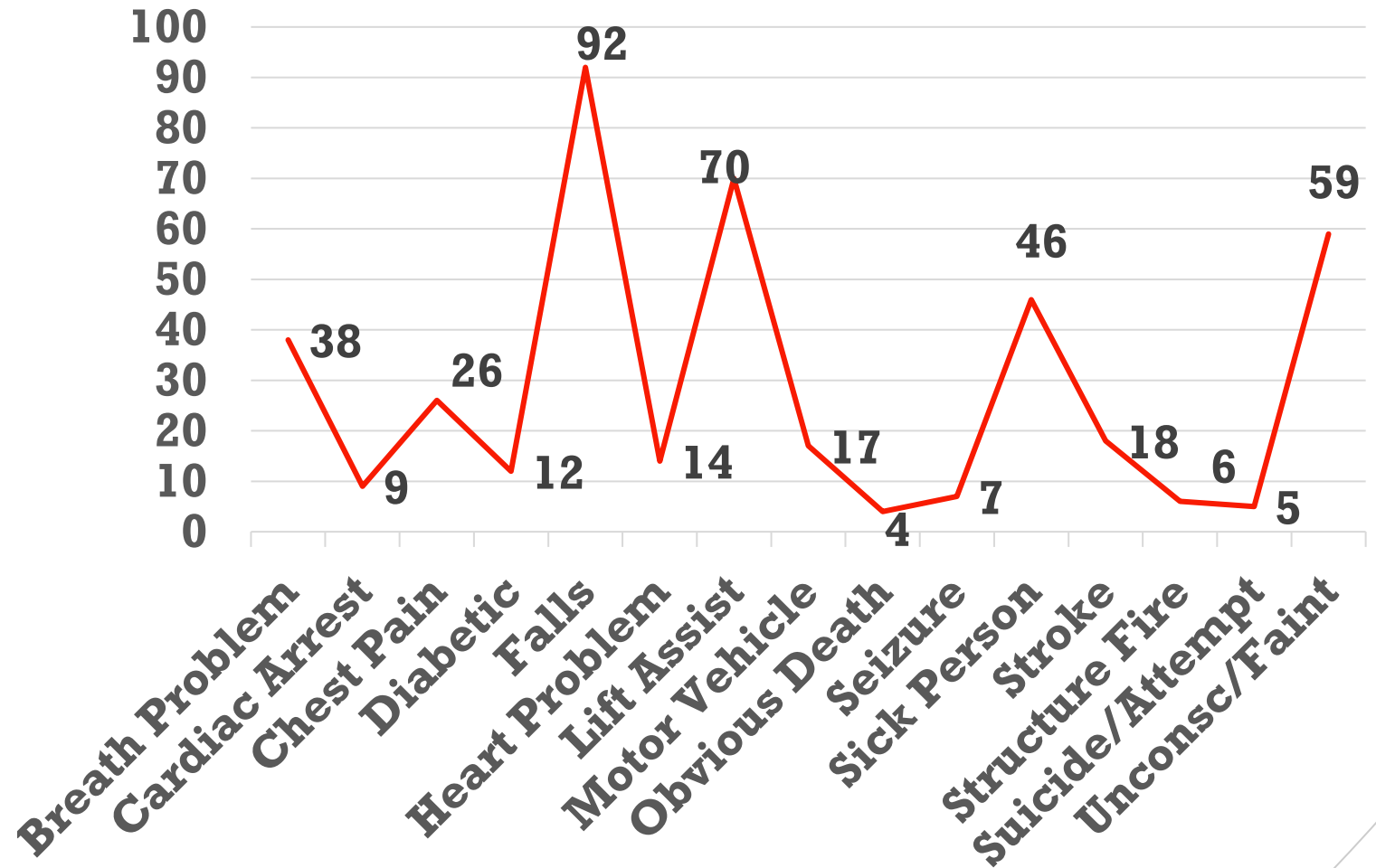
EMS YTD Calls by Category

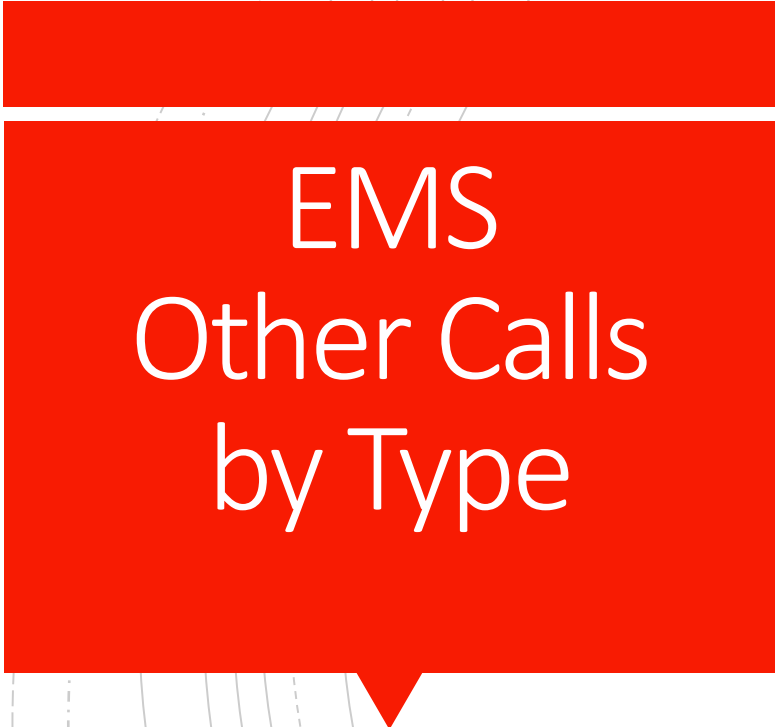
As of June 30, 2025



EMS YTD Calls by Type

As of June 30, 2025



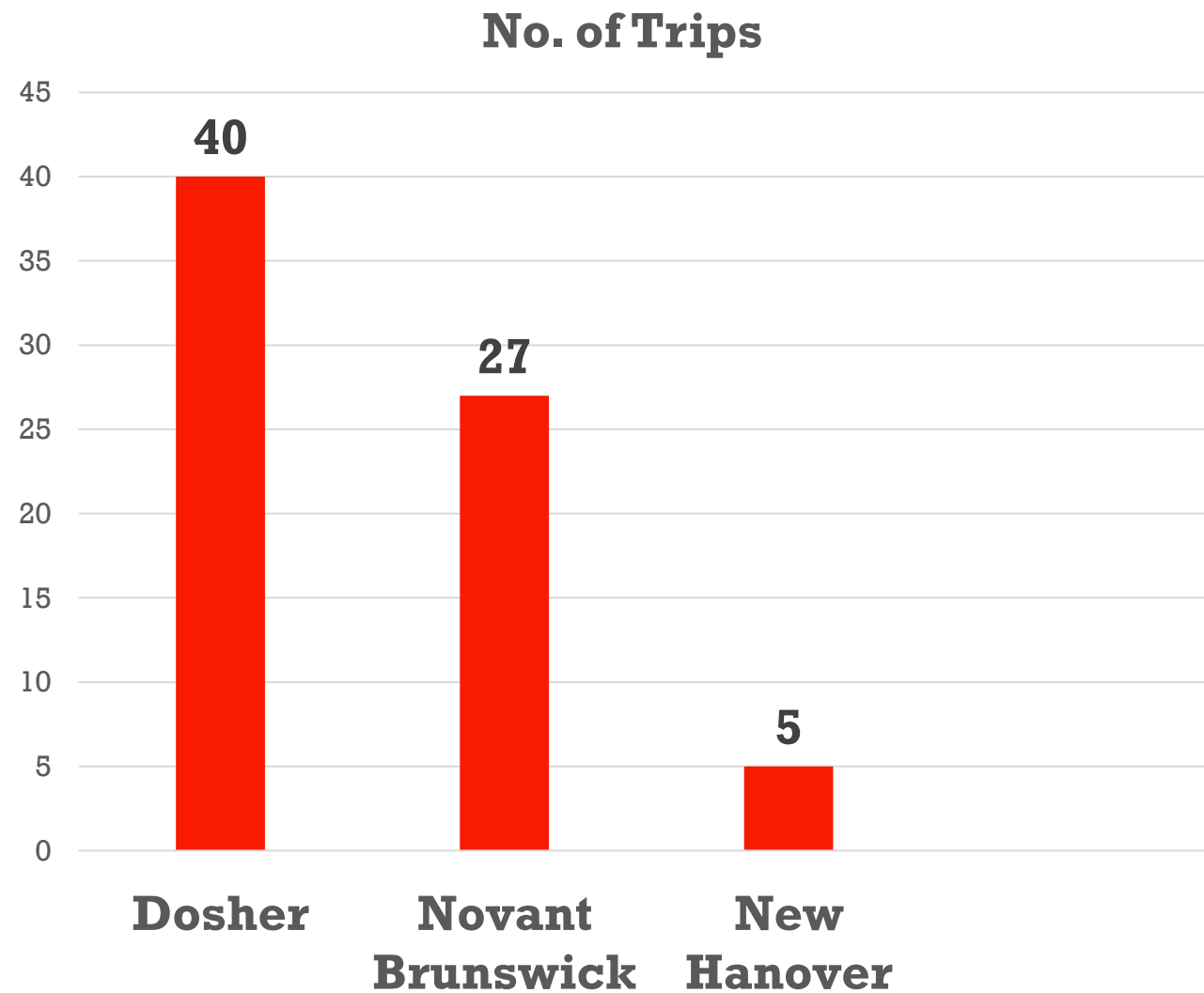
A red speech bubble graphic with a tail pointing downwards, containing the text 'EMS Other Calls by Type'.

EMS Other Calls by Type

- Abdominal Pain
- Accidental Poisoning
 - Allergies
 - Animal Bites
 - Assaults
 - Back Pain
- Domestic Disputes
 - Headaches
 - Heat Exposure
 - Hemorrhages
- Medical Alarm
 - Trauma

EMS Transports by Hospital

July 1, 2024 – June 30 - 2025



Fire Police Division

DUTIES

Direct incoming emergency vehicles

Ensure vehicular & pedestrian safety

Locate & mark hydrants

Assist EMS in patient lifting

Perform CPR & AED usage

Fire Police Division

DUTIES

Conduct ambulance lead-outs

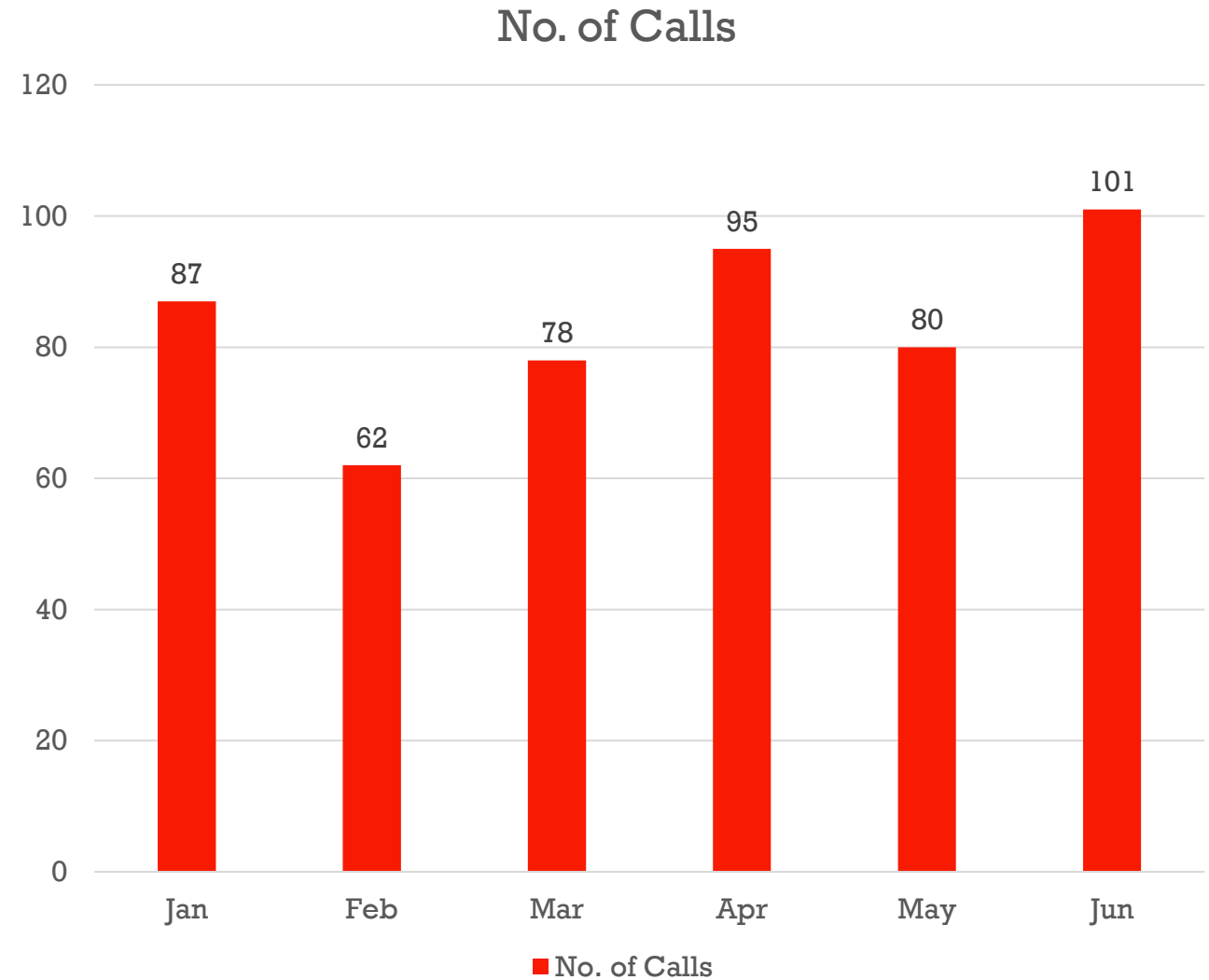
Provide traffic management & safety for community events (i.e. Shredding Day, Fireworks)

Manage temporary large scale road closures (storms, accidents)

Fire Police YTD Calls

Fire Police respond only within the confines of St. James Plantation and Arbor Creek. Total Calls YTD: 503

As of June 30, 2025



The background features a series of concentric circles in light gray, some solid and some dashed, creating a ripple effect. A large red speech bubble is centered on the page, pointing downwards.

Training Requirements

Fire Training



A red speech bubble graphic with a white outline, containing the text 'Fire Training'. The bubble has a tail pointing towards the bottom left.

Fire Training

- All firefighters must complete 192 hrs of ongoing training each year.
- An additional 8 hrs of Haz Mat training is also required.
- Ongoing Training: Mondays and Wednesdays of each week.
- Monthly joint training sessions with SJFD divisions or local fire departments.

A red speech bubble graphic with a white outline, containing the text 'Fire Training'. The bubble has a tail pointing towards the bottom left.

Fire Training

- New recruits start with 20 online courses
 - Protective Equipment, hose management, ladders, extinguishers, water mapping & more.
- Follow up with live practical classes
 - Once complete, candidate rides in truck jump seat.
- Live fire training assesses ability to be interior firefighter.

EMS Training



A red speech bubble graphic with a white border, containing the text "EMS Training".

EMS Training

- Initial First Responder Course – 25 hrs
- EMT Certification Program – 300 hrs
- Continuing Education – 90 hrs over 4 yrs in specific and optional courses
- Continuing Education Opportunities:
 - 3 hrs/mo in-house
 - 3 – 6 hrs/mo online training available
- Monthly Meeting – 1-2 hrs long

Fire Police Training



Fire Police Training: New Recruits

- Initial onboarding w/officers: 2-3 hrs
 - Procedures overview
 - Equipment assignment
- Orientation tour of St James: 4-5 hrs
 - Critical areas such as condos, Marina, HazMat locations
- At scene coaching w/Incident Commander: 30-60 days
- Upon completion, assignment to Night Team

The background of the slide features a series of thin, curved lines in light gray and white, creating a sense of motion and depth. These lines are more prominent on the left and right sides, framing the central content.

Fire Police Training: Ongoing

- Must complete at least 36 hrs annually
- Classroom and incident scenario drills: 4 hrs on the 1st Tuesday each month
- Special classes: 4–8 hrs each
 - CPR, AED, First Aid, HazMat, NIMS, Traffic Signals
 - Hands on & Online training
- Joint divisional training events

The background features a series of concentric circles in light gray, some solid and some dashed, creating a ripple effect. In the center, there is a red speech bubble with a white outline. The text "Looking Ahead: Long-Term Planning" is written in white inside the bubble.

Looking Ahead: Long-Term Planning

A red speech bubble graphic with a white outline, pointing downwards. It contains the text "Looking Ahead" in white.

Looking
Ahead

5-Yr Plan 2026-2030

- Focus on development across 211
- How to recruit volunteers
- What and where to stage equipment

A red speech bubble graphic with a white border, containing the text "Looking Ahead".

Looking Ahead

- **Funding for the future: Fire Tax or Fire Fees**
 - Taxes based on value
 - Fees based on heated space & capped rates
 - Greatest impact on unincorporated areas

A red speech bubble graphic with a white border, containing the text 'Looking Ahead'. The bubble has a tail pointing towards the bottom left.

Looking Ahead

- Facilities & Major Equipment
 - 10-yr rolling capital plan
 - Increasing reserves
- Personnel & other costs if a paid department

A red speech bubble graphic with a white outline, pointing downwards. It contains the text 'Important Take-Aways' in white. The background of the slide features faint, curved, concentric lines in the top left and bottom right corners.

Important Take-Aways

1. We are a Professional Organization run by Volunteers.
2. We impact our community every day!
3. Recognize the importance and value of an ALL-VOLUNTEER organization.
4. When you see our flashing lights, please move to the right and STOP.



**Come Join
Us!**